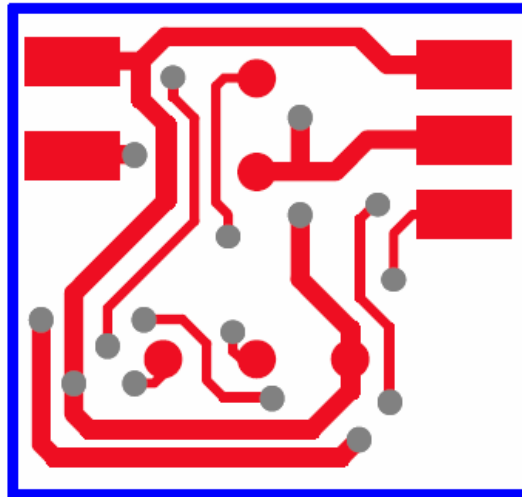


**RC Switch: the complete solution for digital camera control Kit Version**

**Camera Cable
(GND) -
Signal out**



Solder side

**Servo Cable
- (GND)
+5V
Signal**

To complete your kit version of RC-Switch you have to install the servo cable for the receiver connection and the cable to operate the camera shutter; looking the circuit at the solder side, the cable for receiver connection (servo cable) is located on the right side of the circuit, while the cable for the camera (camera cable) is on the left side of the circuit as in the picture.

Both cables have the ground (negative) wire on top.

Respect the servo cable polarity: depending on the cable type (Futaba, Hi-Tech, JR, Graupner) the ground wire [GND] can be black or brown, the positive [+5] is always red and the signal wire can be white or yellow.

Solder the wires with care as the pads are small and very close to other pads and to circuit tracks.

Test the circuit by connecting the switch to a receiver slot and power on the system: the red led must start flashing fast; this means that the switch is working properly, but has to be programmed.

Switch power off, and power on again with the pushbutton pressed to enter the set-up procedure (look at RC-Switch user manual for details).

Your switch is ready to run!